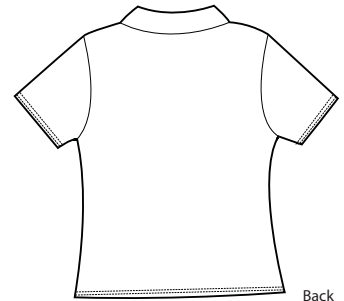


Ladies Diamond Sphere Dry Sport Shirt



Front



Back

358890





Achieve the pinnacle of performance in this new style that pairs a rich diamond texture with Sphere Dry moisture management technology. Perfect for any occasion, this exceptional shirt is designed for maximum movement and minimal cling. Finished with a self-fabric collar and open hem sleeves. Tailored for a feminine fit with a four-button placket, pearlized buttons and the Swoosh design trademark embroidered on the placket. Grosgrain ribbon inside placket for feminine detailing. Made of 6.35-ounce, 89/11

Care Instructions:
Machine wash warm, with like colors.
Do not bleach. Do not use softeners.
Tumble dry low. Cool iron.
Do not dry clean

Finished Measurements in Inches					
Size	S	M	L	XL	2XL
Chest	18 3/4"	20"	21 1/2"	23"	24 1/2"
Length	24 1/2"	25"	25 1/2"	26"	26 1/2"
Sleeve	14"	14 3/4"	15 1/2"	16 1/4"	17"
Neck	8 1/8"	8 1/2"	8 7/8"	9 1/4"	9 5/8"

Chest width measured 1" below arm hole. Body length measured from back neck seam to hem.
Sleeve length measured from center back neck seam to hem. Neck opening measured from center back neck to bottom of placket.

Colors

-  Black
-  White
-  Midnight Navy
-  Chlorophyll
-  Varsity Red
-  Pro Blue
-  Light Blueberry

Please Note:
Colors shown are approximate and for reference only.
For closest match see PMS colors, or for exact match, returnable samples and grommited samples are available.

Color Chart				
Colors	Black	White	Midnight Navy	Chlorophyll
Textile PMS	No Match	No Match	No Match	No Match
General PMS	ProBlk C	ClyGy 1 C	432 C	7491 C
Colors	Varsity Red	Pro Blue	Light Blueberry	
Textile PMS	No Match	No Match	No Match	
General PMS	187 C	7545 C	653 C	